

Heavy Equipment Armor

Protection you can count on!



HEAVY EQUIPMENT
ARMOR
PROTECTION YOU CAN COUNT ON!

Protect yourself and your assets.

Protection You Can Count on!

Heavy Equipment Armor is the first and only company dedicated to top guard, and enhanced cab guard products for **Caterpillar** skid steers.



**Caterpillar Top Guard
and Enhanced Guarding**

www.Hearmor.com

208.772.3076

Skid Steer Protection

We offer complete fabrication of enhanced guard packages to guard and protect your employees and your machine. This enhanced guarding can be used on newer CAT Skid Steer "D" models. Enhanced cab guards do not interfere with the tilting capacities of the cab for servicing of the machine. Comes with all the necessary hardware and complete instructions.

Top Cab Guards

Protect your investment by using our top cab guarding on your **Caterpillar Skid Steer**



**GUARDING FOR TOP OF THE CAB.
DON'T LET FALLING
OBJECTS STOP YOU.**
[PART# CATD-GC]



**CAT Skid Steer Top Cab Guard System PART# CATD-CG
(Shown with Caterpillar Cooler)**



**CAT Skid Steer Top Cab Guard System PART# CATD-CG
(Shown with Caterpillar Cooler)**



**CAT Skid Steer Top Cab Guard System
PART# CATD-CG
(Shown without Caterpillar Cooler)**

Fits current CAT "D, D2, & D3" model skid steers, compact track loaders, and multi terrain loaders:

259D, 262D, 272D, 277D, 279D, 287D, 289D, 297D, 299D, 272D2, 272D2 XHP, 287D2, 297D2 XHP, 299D2, 299D2 XHP, 257D3, 258D3, 262D3, 272D3, 272D3 XE, 279D3, 289D3, 299D3, 299D3 XE, 299D3 XE Land Management

CAT Skid Steer Top Cab Guards Overview:

- Includes guarding for top of the cab.
- Works on skid steers with auxiliary hydraulic cooler OR without auxiliary hydraulic cooler.
- Allows easy access for under cab maintenance.
- No modifications to the carrier are required during installation process.
- Simple bolt on system with hose routing.
- Approximate installation time; 2 hours.
- Includes all necessary hardware and complete instructions.
- For "D1, D2 & D3" model CAT skid steers.



**Top Cab Guard for Skid Steer Cab
PART# CATD-CG**

PLEASE NOTE: This guard is intended as a brush guard only. It is not a certified FOPS/ROPS guard.

Enhanced Guarding

Guard your cab and motor area with our **Enhanced Guarding for Caterpillar Skid Steers**



**AVAILABLE IN 2 STYLES:
SHORT AND LONG**
(PART# CATD-EG OR CATD2-EG)



Protects your top cab and motor area.



Works with or without the auxiliary hydraulic cooler.



Takes about 2 hours to install.

Fits current CAT "D, D2, & D3" model skid steers, compact track loaders, and multi terrain loaders:

259D, 262D, 272D, 277D, 279D, 287D, 289D, 297D, 299D, 272D2, 272D2 XHP, 287D2, 297D2 XHP, 299D2, 299D2 XHP, 257D3, 258D3, 262D3, 272D3, 272D3 XE 279D3, 289D3, 299D3, 299D3 XE, 299D3 XE Land Management

CAT Skid Steer Enhanced Guard Overview:

We offer complete fabrication of enhanced guard packages to guard and protect your employees and your machine. This enhanced guarding can be used on newer CAT Skid Steer "D, D2, & D3" models. Enhanced cab guards do not interfere with the tilting capacities of the cab for servicing of the machine. Comes with all the necessary hardware and complete instructions.

Whether your machine will be moving dirt and rock with a bucket, lifting materials on a job site, mulching or doing a specialized job with an attachment, our enhanced skid steer guarding will be there to help protect the operator and the skid steer.

- Includes guarding for top of the cab and motor area.
- Works on skid steers with auxiliary hydraulic cooler OR without auxiliary hydraulic cooler.
- Allows easy access for under cab maintenance.
- No modifications to the carrier are required during installation process.
- Simple bolt on system with easy hose routing.
- Approximate installation time; 2 hours.
- Includes all necessary hardware and complete instructions.
- For "D, D2 & D3" model CAT skid steers.

PLEASE NOTE: This guard is intended as a brush guard only. It is not a certified FOPS/ROPS guard.

Skid Steer Protection

Enhanced cab guards do not interfere with the tilting capacities of the cab for servicing of the machine. Comes with all the necessary hardware and complete instructions.

Available in 2 styles: Short Version and Long Version

Enhanced CAT Skid Steer Guarding System
PART #CATD-EG [SHORT]



Enhanced CAT Skid Steer Guarding System
PART #CATD2-EG [Long]



This system will fit current CAT skid steer models 226D3, 232D3, 236D3, 239D3, 242D3, 246D3, 249D3, 257D3, 258D3, with side mount.

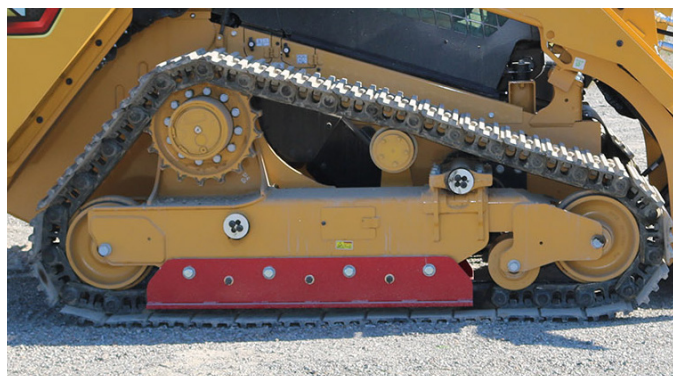
This system will fit current CAT skid steer models 262D3, 272D3, 272D3 XE, 279D3, 289D3, 299D3, 299D3 XE, 299D3 XE Land Management

PLEASE NOTE: This guard is intended as a brush guard only. It is not a certified FOPS/ROPS guard.

Rock Guards

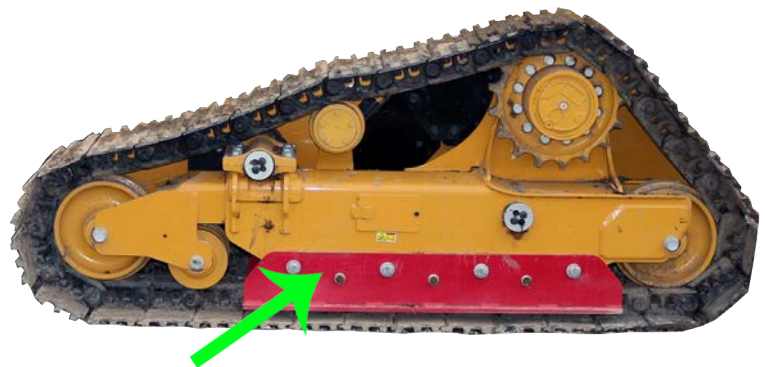
Our **Rock Guards** helps prevent steel tracks from coming off! **Only for Caterpillar D3 Steel Track Skid Steers.**

**ONLY AVAILABLE FOR D3
STEEL TRACK MODELS**
(PART# CATD3-RG)



- This product is designed to work on **CAT299D3 XHP steel track machines ONLY.**
- Helps prevent debris from getting into the track system.
- No modifications to skid steer required.
- Easy installation through factory mounting locations.
- Gain stability in steep or uneven terrain.
- Rock guards come with heavy duty bolts and spacers.

PART# CATD3-RG



Helps prevent tracks from coming off! & Extends the life of your undercarriage!

PLEASE NOTE: This guard is intended as a brush guard only. It is not a certified FOPS/ROPS guard.

Skid Steer Protection

Safety is our primary concern for all those that operate Skid steers, view our collection of skid steer guarding products which include ballistic grade protection doors and enhanced cab guarding.

STANDARD ONE YEAR MANUFACTURER WARRANTY: The manufacturer warrants this product to be free from defects in workmanship and materials, under normal use and conditions, for a period of one (1) year for the original invoice date. Shipping and handling fees are to be paid for by the customer. The manufacturer agrees, at its option during the warranty period, to repair and defect in material or workmanship or to furnish a repaired or refurbished product of equal value in exchange without charge (except for a fee for shipping, handling, packing, return postage, and insurance which will be incurred by the customer). Such repair or replacement is subject to verification of the defect or malfunction and proof of purchase as confirmed by showing the model number on original dated sales receipt. Heavy Equipment Armor also guarantees its Defender Window/Door edge banded products against de-lamination, irregular surface discoloration, warpage or twisting for a period of one (1) year from the date of purchase. The warranty only covers defects as specified herein and does not include defects or damages attributable to misuse or normal surface weathering, or defects or damages caused by accidents or fire or other casualty or Acts of God, or any other causes or occurrences beyond the manufacturer's control. The exclusive remedial action provided for the customer hereunder shall be repair, restoration, replacement or return and refund of the products manufactured by Heavy Equipment Armor works found to be defective.

WARRANTY LIMITATIONS

This warranty does not include:

- Damage resulting from product being stored in areas subject to abnormal heat, ultraviolet rays, cold, dryness, humidity, direct sunlight, fire, collision and foreign any other Acts of God or occurrences beyond the control of Heavy Equipment Armor.
- Damage resulting from extreme moisture (bleaching, etc.), Condensation and moisture formation where condensation is caused by excessive in-house relative humidity or by appliances generating steam vapor.
- Any condition resulting from incorrect or inadequate maintenance or care.
- Damage resulting from misuse, abuse, negligence, accidents, or shipping damage.
- Dissatisfaction due to buyer's remorse.
- Normal wear and tear.
- Damages incurred during transportation.
- Damages incurred during assembly or maintenance.
- Damage because of using cleaning products containing ammonia or acetone.
- Fading or oxidation of finishes due to atmospheric changes and normal weathering.
- Any used, previously displayed items.

Heavy Equipment Armor makes no express warranty or condition whether written or oral and the company expressly disclaims all warranties and conditions not stated in this limited warranty. To the extent allowed by the local law of jurisdictions outside the United States, the Company disclaims all implied warranties or conditions, including any implied warranties of merchantability and fitness for a particular purpose. For all transactions occurring in the United States, any implied warranty of condition of merchantability, satisfactory quality, or fitness for a particular purpose is limited to the duration of the express warranty set forth above. Some states or countries do not allow a limitation on how long an implied warranty lasts or the exclusion of limitation of incidental or consequential damages for consumer products. In such states or countries, some exclusions, or limitations of this limited warranty may not apply to the Purchaser. For consumer transaction, the limited warranty terms contained in this statement, except to the extent lawfully permitted, do not exclude, restrict, or modify but are in addition to the mandatory statutory rights applicable to the sale of this Product to the Purchaser.

CLAIM PROCEDURES:

- Claims for defective merchandise must be made within ONE year from invoice date.
- Claims for missing parts must be made within 30 calendar days after the merchandise is received.
- Any claim for defective merchandise returns must be packed in original packaging.
- We reserve the right to specify that items be returned to the original warehouse for inspection.
- Pictures are required to claim defective merchandise, along with a copy of the original invoice.
- If the claim is justified, the item(s) or part(s) will be repaired or replaced, or a credit will be issued. It is our policy to replace parts whenever possible.

This warranty gives you specific legal rights. You may have other rights, which vary from state to state.



**HEAVY EQUIPMENT
ARMOR**
PROTECTION YOU CAN COUNT ON!

Our Story:

Heavy Equipment Armor is the first and only company dedicated to building ballistic window/door, top guard, and cab guard products for heavy equipment. Whether your machine is moving dirt with a bucket, lifting materials on the job site, masticating, demolition, or doing a specialized job with an attachment; You can count on Heavy Equipment Armor's UL 752 Rating ballistic window and cab guards protecting your assets! Our enhanced guarding will be there to help protect the operator and the heavy equipment.

Heavy Equipment Armor was created because of the need for additional guarding on heavy machinery like Excavators and Skid Steers. These machines are increasingly being tasked as stand-alone machines because of their ability to carry multiple different tools to get the job done, and they dominate the modern job site.

Our enhanced products like our cab guards for excavators and skid steer armor add another safety protection level for the operator and the machine. A company's most valuable asset is protected – **It's PEOPLE**. This, in turn, reduces injuries which reduce business costs and disruption. Our heavy equipment protection also improves work quality. Insurance claims decrease in safe work environments with Heavy Equipment Armor's enhanced cab guards and ballistic grade UL 752 windows.



Sales

Telephone: 208.772.3076

E-mail: sales@hearmor.com

Headquarters

50287 N Old Hwy 95, Rathdrum, ID 83858

Visit us: hearmor.com

www.Hearmor.com